

EXECUTIVE PAPERS

A PUBLICATION OF

THE HEREDITARY ORDER OF
THE FAMILIES OF THE
PRESIDENTS AND
FIRST LADIES
OF AMERICA



AN ISSUE OF NEW ROYAL DISCOVERIES



ISSUE 8, AUTUMN 2011

In this Issue ...

Message from the Postmaster General of the Order	1
Message from the President of the Order	2
Making a (Small) Mark in the Genealogical World	3
Our Officers (2011-2013)	4
Editorial	5
Ahnentafels – First Ladies –	
Helen Herron	6
Ellen Louise Axson	14
Edith (Bolling) Galt	29
Plotting the Course to a New Gateway Ancestry for Edith (Bolling) (Galt) Wilson	37
Presidents and First Ladies Trivia	39
Revisions to Prior Issues	40
White House Dining Protocol (in 1925)	41
“Caught in the Act, So to Speak”	42
Kinship Diagrams	
Multi-Descent Diagrams	45
Royal Descent Tables	70

Ahnentafels – Presidents –	
William Howard Taft	73
(Thomas) Woodrow Wilson	83
Executive Pillowtalk – “The Value of the Birth Certificate: A Presidential Controversy”	85
Presidential Currency	86
Minutes of the 9 th Annual Tea	87
Answers to Presidents and First Ladies Trivia	88
Our Library – 2010-2011 Accessions	88
Medieval Irish Warlord Boast 3 Million Descendants	89
Membership Rosters	
Necrology	90
Memorial Members	90
Deceased Members	90
Junior Members	90
Tribute to Betty Ford (1918-2011)	92
Order’s Forms and Instructions	94
Index to Diagrams – Issues 1-8	103
Order’s Price List	Inside Back Cover
Advertisements	Inside and Outside Back Cover

The Order occasionally communicates with its members by e-mail. If you have blocked your e-mail server from receiving attachments or do not have the Order’s officers listed among your approved senders, you may not be able to receive e-mail messages from the Order. You may miss receiving announcements of our meetings or other matters of import to our members. Please make a point of adding our officers to the list of your allowed e-mail senders. Their addresses are found elsewhere in this issue. In addition, please be sure to notify the editor if your address or other contact information has changed, in order to keep our records up to date. Please remember: by sending things via e-mail, the Order’s resources are better used, thereby reducing the need to increase dues.

PLEASE NOTE: All members are advised that the following publications are not acceptable as proof documentation for lineages to Presidents and First Ladies:

Craig Hart, *A Genealogy of the Wives of the American Presidents and Their First Two Generations of Descent* (Jefferson, NC: McFarland & Co., 2004).

Ronald Vern Jackson and Mrs. Altha Polson, *American Patriots* (priv. pub., 1981).

The Postmaster General (editor) welcomes all changes, additions and corrections (including typographical errors) to this and all issues of *Executive Papers*. In the event a reader possesses documentary evidence for any of the First Ladies’ ancestries that conflicts with information appearing in this publication, please contact the Postmaster General to determine whether that information has been superseded or inadvertently omitted.

The Hereditary Order of the Families of the Presidents and First Ladies was founded April 6, 2003 in Washington, DC. The Order is a tax-exempt organization under Section 501(c)(3) of the Internal Revenue Code. The Order is not incorporated.

EIN: 02-0696188 *Executive Papers* is published once annually, usually in the summer or early autumn.

All back issues (except Issue 1) of *Executive Papers* are available for purchase by members for \$15.00 per issue, which represents the cost of printing and shipping. To obtain copies, contact the Postmaster General (Editor):

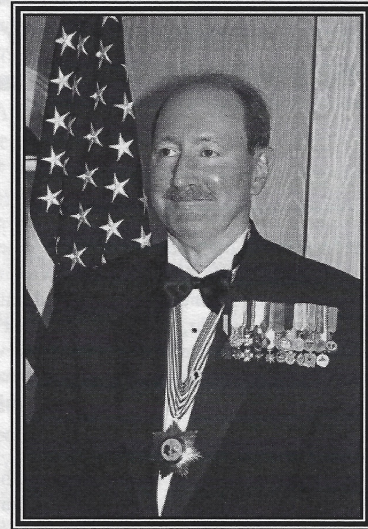
Alexander Bannerman, 1716 Bigley Avenue, Charleston, WV 25302-3938

MESSAGE FROM THE PRESIDENT OF THE ORDER

Fellow Members:

It is a great pleasure and honor to take up the gavel as President of our distinguished Order. I was honored to have been included among its Founders, and am amazed at the tremendous amount that has been accomplished since the Order was founded on April 6, 2003, in Washington, DC.

Much of the credit for our founding and the subsequent work must go to Alex Bannerman (formerly James Raywalt), our Founding President. Alex has done an enormous amount of genealogical research, especially on the ancestries of America's First Ladies, and published this information for future generations to use and enjoy. As you know, Alex also serves as our Secretary of the Registry and our Postmaster General, and has been a key player in helping to organize our terrific trips to Presidential and First Ladies' sites around the country.



Lew Toulmin

photo by Paul F. Davis

Of course, one never would have known about all this from my inaugural speech in April 2011 at the historic Willard Hotel in Washington. There, it was all about me, me, me, which of course, as you all know, it is. With tongue in cheek, here are my historic remarks, preserved for the ages:

Ladies and gentlemen, I am not here to praise Alex Bannerman, Jim Raywalt, or whoever the heck it was who preceded me, but to bury him (them?). Yes, we read in Thomas Fleming's *Intimate Lives of the Founding Fathers* about the endless scandals, the in-fighting, the party politics, and the utter depravity of my predecessor's administration. Fully one-half of this admirable book is filled with appalling stories about the Bannerman-Raywalt-Whatever Administration. Of course, I say all this gently, in the spirit of constructive criticism, not to lambaste our Founder and kick the rascal out.

Some of us in the Administration knew that the term "President for Life Bannerman" must be brought to a close, be it by fair means or foul. After all, he had served four full terms, exceeding even FDR's span, and looked set to continue until the end of the 21st Century. So we hired the greatest expert on "termination with extreme prejudice" in the Nation's Capital, the celebrated author and Presidential child, Margaret Truman, author of *Murder in the White House*, *Murder at the FBI*, *Murder at the CIA*, and *Murder on Capitol Hill*. Who better qualified to solve our little problem?

Unfortunately, after numerous attempts, even Maggie "The Shiv" Truman was defeated by the myrmidons of the mammoth Bannerman security apparatus. She did, however, uncover a scandal so monumental that even President Bannerman was forced to see the light, and he resigned "to spend more time with his family." (Right.) This scandal has now rocked the entire world, as of course you all know (unless you have been on a long trip to Mars lately), from CNN, *60 Minutes*, and Jim Cullen's classically understated book, *Imperfect Presidents*.

So here we are now, finally basking in the light of the new Toulmin Administration. Doubtless you are all keen to know about my platform, since I carefully never uttered a single substantive sentence during my eight years as Fifth Wheel, er, Vice President. I base my entire political philosophy on a joke I once overheard in the men's room in the basement of the Watergate Hotel, to wit:

Once upon a time, in a galaxy far, far away, a newly elected President entered his office for the first time and found three envelopes on his desk, left by his predecessor. The top one was marked "open in the event of a scandal." He was in his honeymoon period with the people and press, so he threw the envelopes in the bottom drawer and forgot about them. A year later, a huge scandal broke upon him. He remembered the envelopes, rushed to his desk, and opened the first envelope. The enclosed note said, "Blame the previous Administration." He did, and it worked. A year later, another scandal exploded. He again rushed to his desk, opening the second envelope. The note read, "Reorganize." He quickly undertook a massive and useless reorganization of the government, which diverted the attention of the public, and things quieted down. Another year passed, and a third gigantic scandal burst. The President rushed to his desk, and ripped open the third envelope. The note said, "Make three envelopes."

So there you have it. My administration will be devoted to vigorously blaming the previous Administration, and to the useless reshuffling of departments and Cabinet officers. I am thinking, for example, of consolidating all 147 HOPFLA law enforcement and intelligence agencies into one super-agency, with (of course) myself as Enforcement Czar. But that is work for the future. For today, let us celebrate my election, my philosophy, my victory, my wonderfulness, and my me-ness.

Your humble Chief Public Servant,

Lew Toulmin, Ph.D., FRGS, FRSA, KTJ, WA/FOAK&W†
President for Eternity, HOPFLA

Did you know ...

Queen Elizabeth II of England (at right) has entertained more Presidents of the United States than any other Head of State in history. She has entertained every President since Harry Truman, for a total of twelve.



Born Elizabeth Alexandra Mary Windsor on 21 April 1926 at London, Queen Elizabeth II (1952-) is now in her 61st year as Queen of England. If she continues for 44 more months, she will surpass her 2nd great-grandmother, Queen Victoria (1837-1901), to become the longest-reigning Monarch in British history. Currently she ranks as the 65th longest-reigning monarch in world history.

Image from the internet in the public domain

MAKING A (SMALL) MARK IN THE GENEALOGICAL WORLD

When the idea of this magazine was first conceived, we had four primary goals: 1) to contribute to a better understanding of genealogy through encouragement of sound research, 2) to serve as a vehicle of education by bringing interesting facts to light for our readers, 3) to assemble as accurate an account as possible of the genealogies of the First Ladies, and 4) to discover, if possible, previously undiscovered ancestors of those First Ladies. In these four ways, we believe we can make our small mark in the genealogical world. Over the course of time, we hopefully have continued to realize these goals. With this issue, perhaps more than any other previous issue, we have particularly accomplished the fourth goal. Through our diligence, and with the support of our friends at NEHGS and others, we have managed to discover and document previously undiscovered royal descents for each of the two Mrs. Wilsons. With our discoveries of Ellen Axson Wilson's descent from Thomas Burnham and Marie/Mary Lawrence (she, the Gateway ancestor), and a royal descent via Anna (Tucker) Palmer (previously unidentified as a Gateway ancestor for anyone), we have enlarged the First Lady's number of Gateway ancestries from three to five. Our discovery of Edith Bolling Wilson's descent from Edwin Conway and Martha Eltonhead (she, the Gateway ancestor) gives that First Lady a total of seven royal descents to date. In the genealogical world, these discoveries are significant for anyone, but when one considers these are for individuals whose lineages have been worked with, at least in part, for several decades, such finds are rare and all the more worth appreciating. We are excited to be able to present these ancestries, and hope our members will share in that excitement.

— Alex Bannerman, Postmaster General

† Piled Higher and Deeper (Phoenix University, Honorary), Fellow of the Royal Geographical Society, Fellow of the Royal Society for the Encouragement of Arts, Manufactures and Commerce, Knight of the Temple of Jerusalem, World Authority/Font of All Knowledge and Wisdom.